

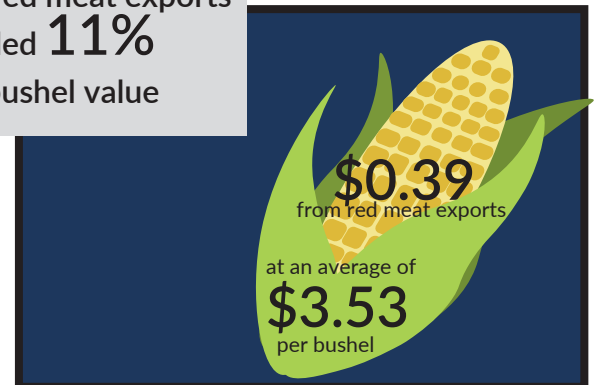
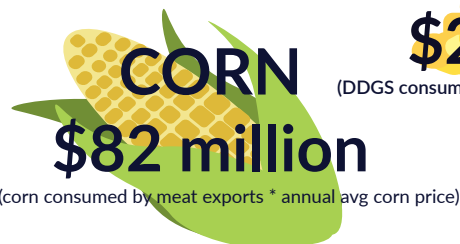


# Exporting South Dakota Corn through U.S. Beef and Pork



In 2018, the market value of red meat exports to South Dakota

In 2018 red meat exports added **11%** of bushel value



Without red meat exports, South Dakota corn growers would have lost **\$287 million in corn revenue** in 2018

(state corn production \* \$0.39/bushel)

**\$963 Million**

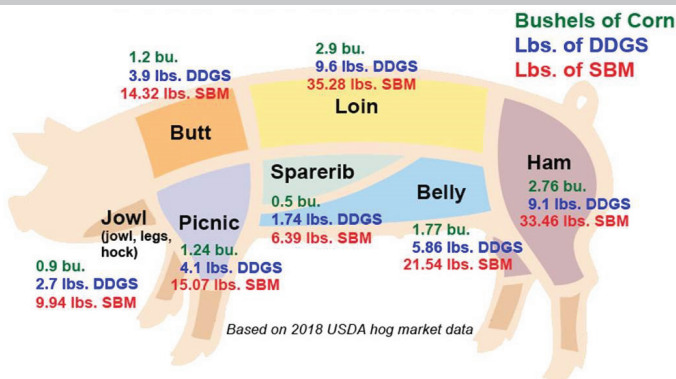
The projected market value of red meat exports to South Dakota **corn** from 2019-2028



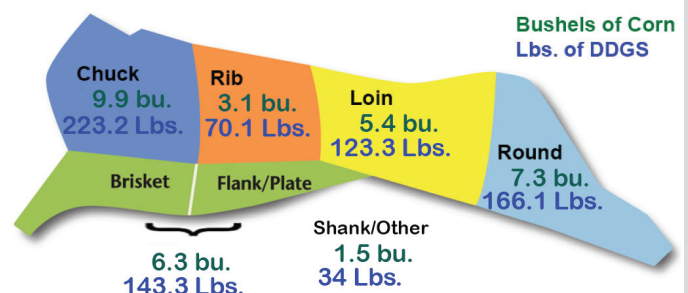
**\$214 Million**

The projected market value of red meat exports to South Dakota **DDGS** from 2019-2028

## Feed Cut Out for Pork



## Feed Cut Out for Beef





**14.1%** of U.S. beef  
is exported

#### Top Beef Value Export Markets

- Japan
- Korea
- Mexico
- China/Hong Kong
- Canada
- Taiwan

**\$309.75**

Value per head of  
fed cattle slaughtered  
from U.S. beef exports

**26.9%** of U.S. pork  
is exported



#### Top Pork Value Export Markets

- Japan
- China/Hong Kong
- Mexico
- Canada
- Korea

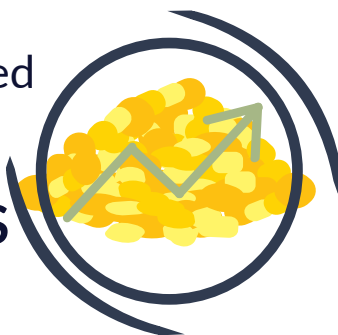
**\$53.51**

Value per head of  
hogs slaughtered from  
U.S. pork exports

\*\*2019 data

Since 2015, beef and  
pork exports have used

**35% more  
DDGS**



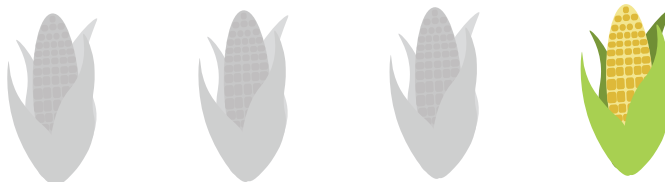
### Rate of Growth in Corn Use 2015-2018

Beef & Pork Exports	29%
Direct Exports	24%
Ethanol	9%
Total Feed	8%

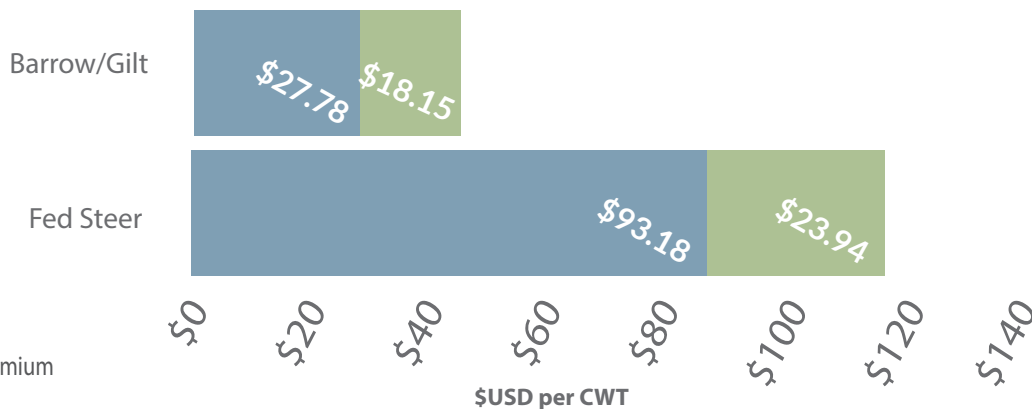


Beef and pork  
exports have been the  
**FASTEST GROWING**  
category of corn use  
since 2015

**1 in 4** bushels of increased feed use  
was exported through beef and pork



## 2018 Market Price & Export Premium



The export premium directly impacts livestock finishers' capacity to cover feed costs. A positive export premium adds to the profitability of feeding, which helps both the feeder and the farmer.