

PASTURE TO PLATE:

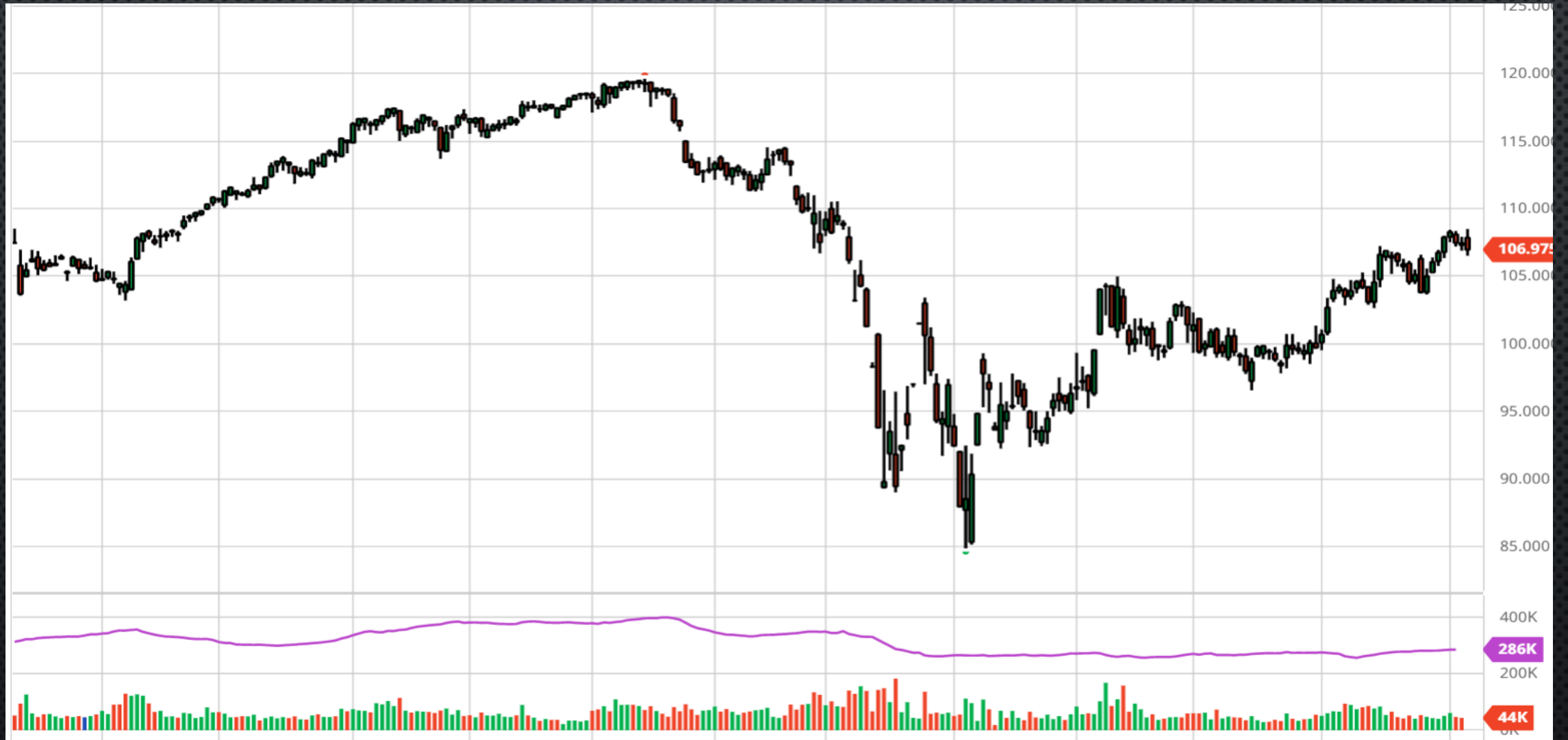
CATTLE AND BEEF MARKET OUTLOOK

MIKE PEARSON

SOUTH DAKOTA FARM BUREAU

AUGUST 6TH, 2020

OCTOBER LIVE CATTLE 2020



6 MONTH CHART – OCT LIVE CATTLE



SEPTEMBER 2020 FEEDER CATTLE



CHOICE BOXED BEEF



BEEF SLAUGHTER

YOY change in fed cattle slaughter per week in 2020

Thousand head



Note: YOY = Year over year.

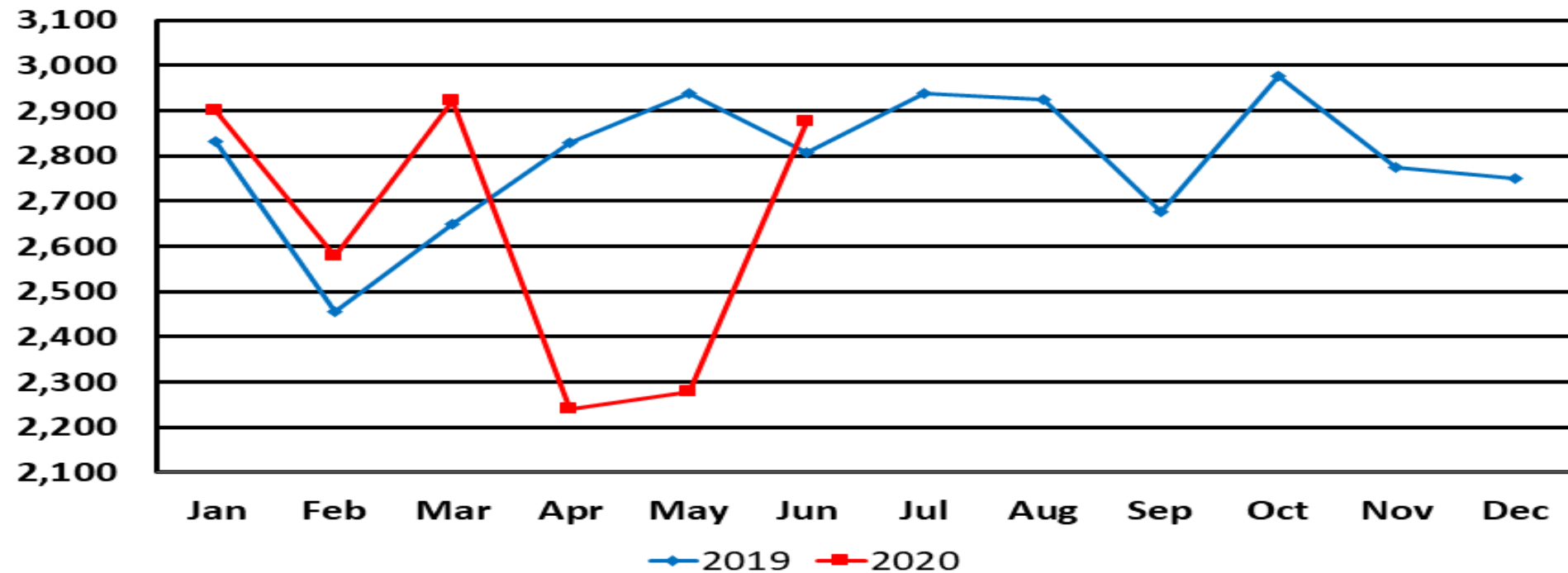
Source: USDA, Economic Research Service calculations using data from USDA, Agricultural Marketing.

Livestock, Dairy, and Poultry Outlook, LDP-M-312, June 17, 2020 USDA,
Economic Research Service.

CATTLE SLAUGHTER/HEAD

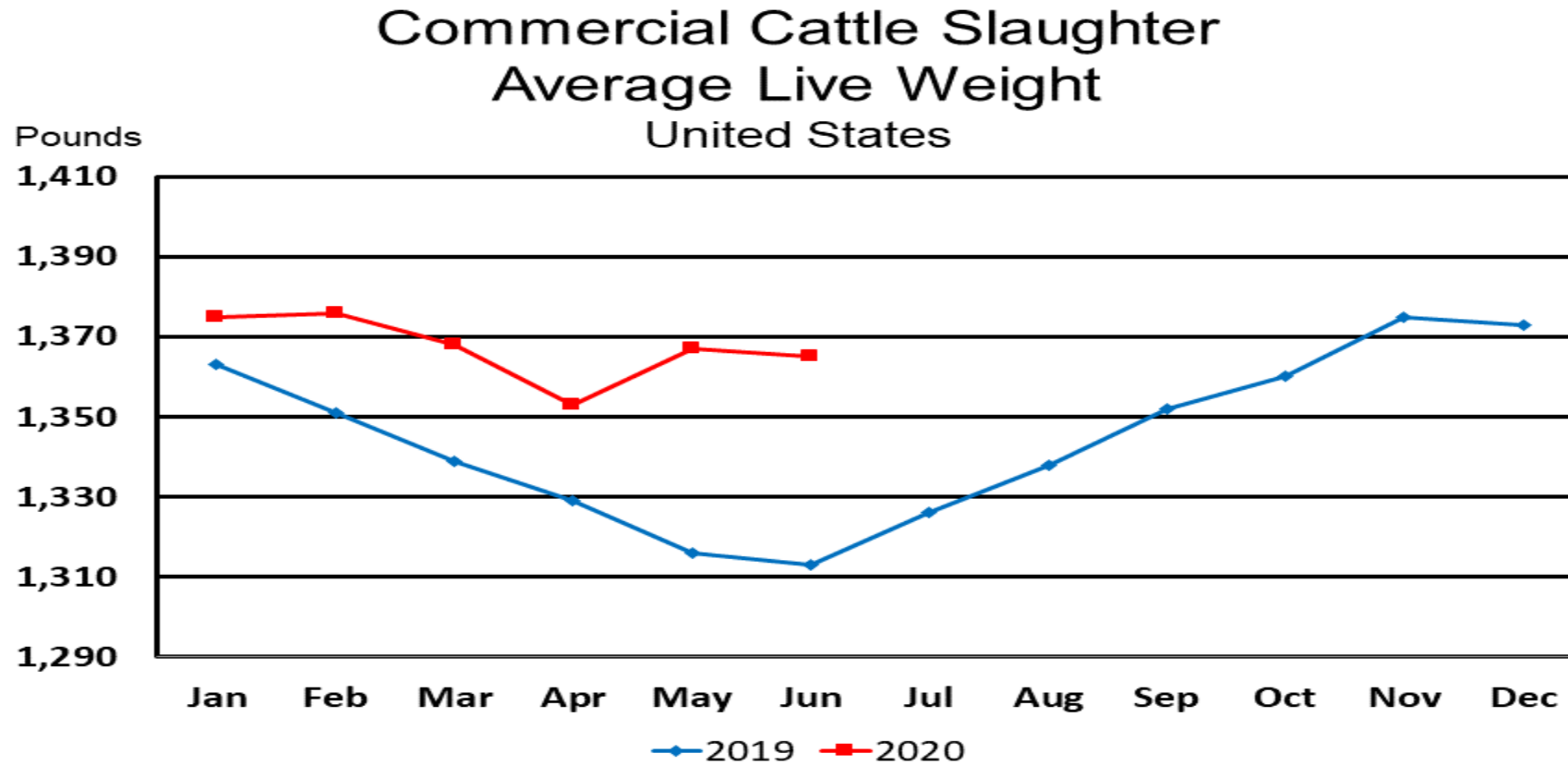
Commercial Cattle Slaughter United States

Thousand head



USDA-NASS
7-23-2020

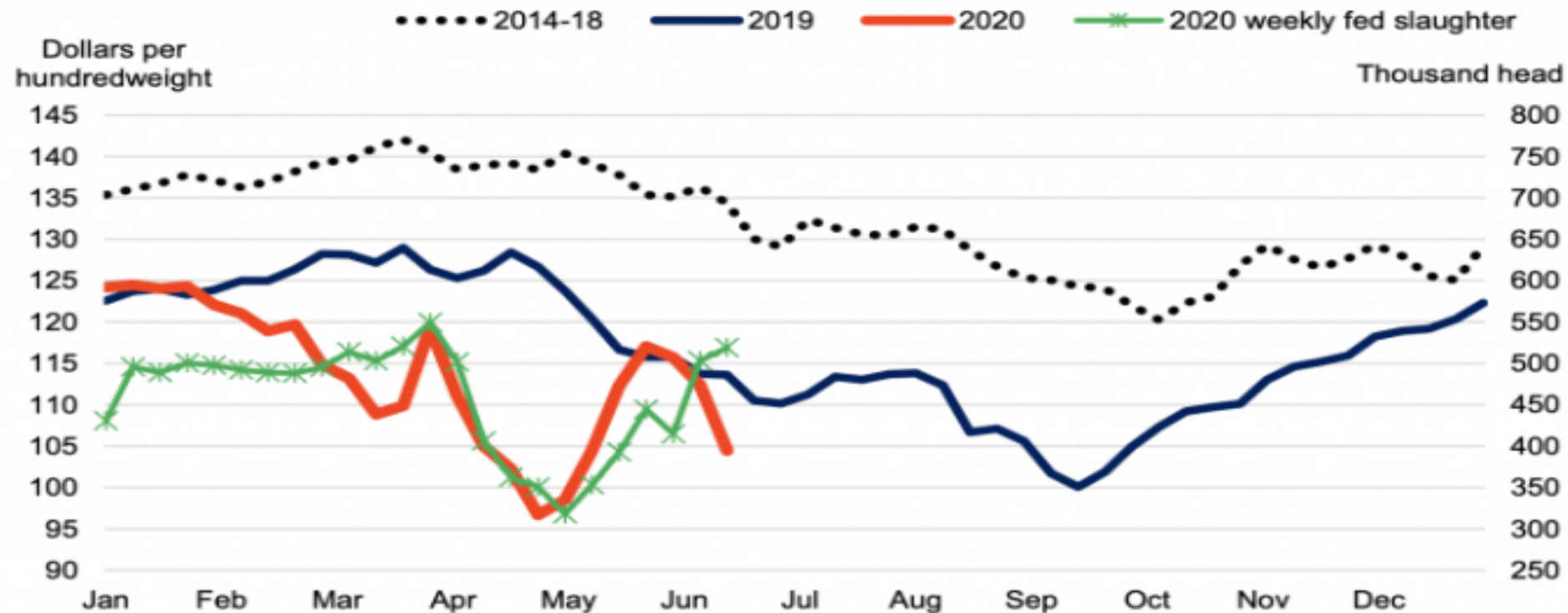
SLAUGHTER/LIVE WEIGHT



USDA-NASS
7-23-2020

LIVEPRICE/SLAUGHTER

Weekly average live steer price and weekly fed cattle slaughter



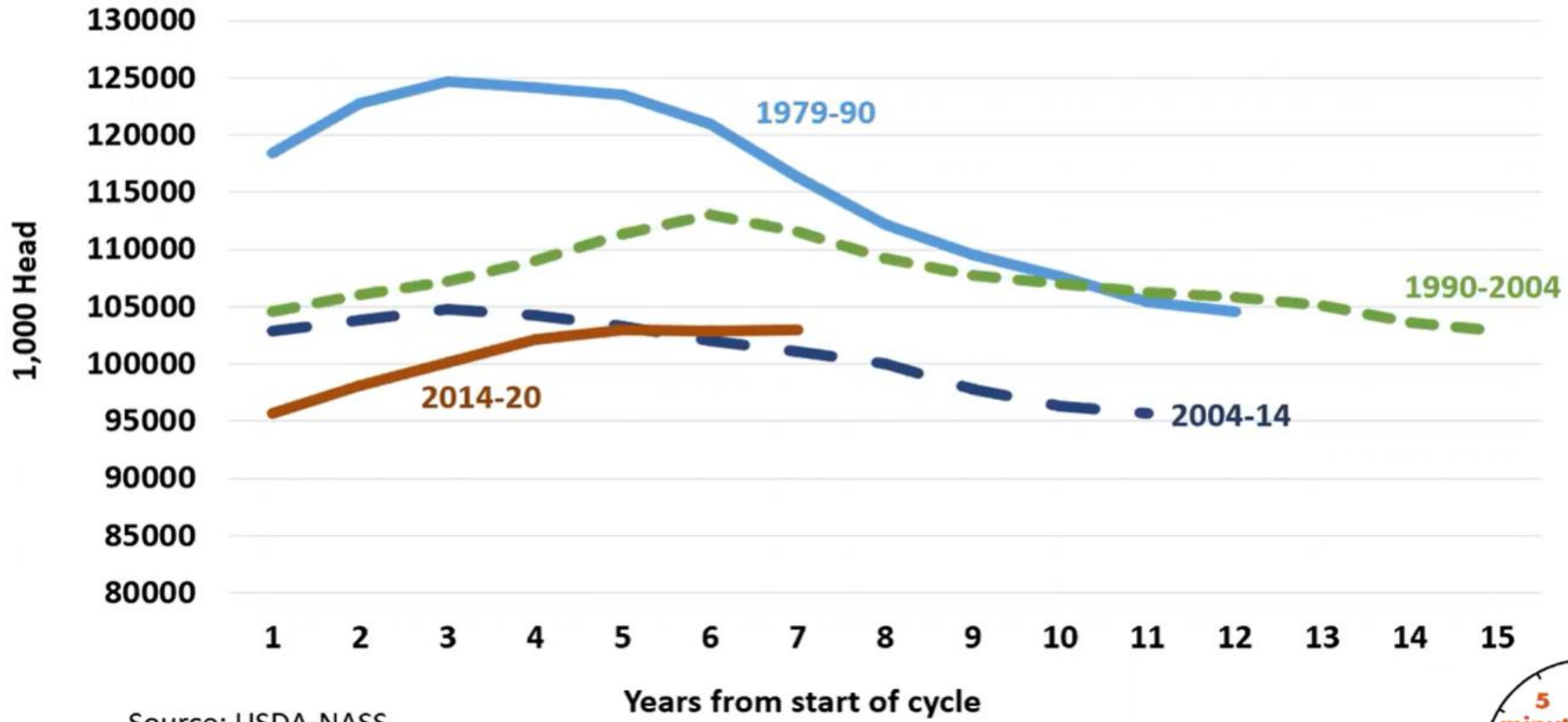
Note: The live steer price is based on prices reported for all grades in the 5-area marketing region.

Source: USDA, Economic Research Service calculations using data from USDA, Agricultural Marketing Service.

Livestock, Dairy, and Poultry Outlook, LDP-M-312, June 17, 2020 USDA,
Economic Research Service.

CATTLE INVENTORY JUNE 1 2020

Jul 1 Inventory of Cattle & Calves in U.S. by Cycles



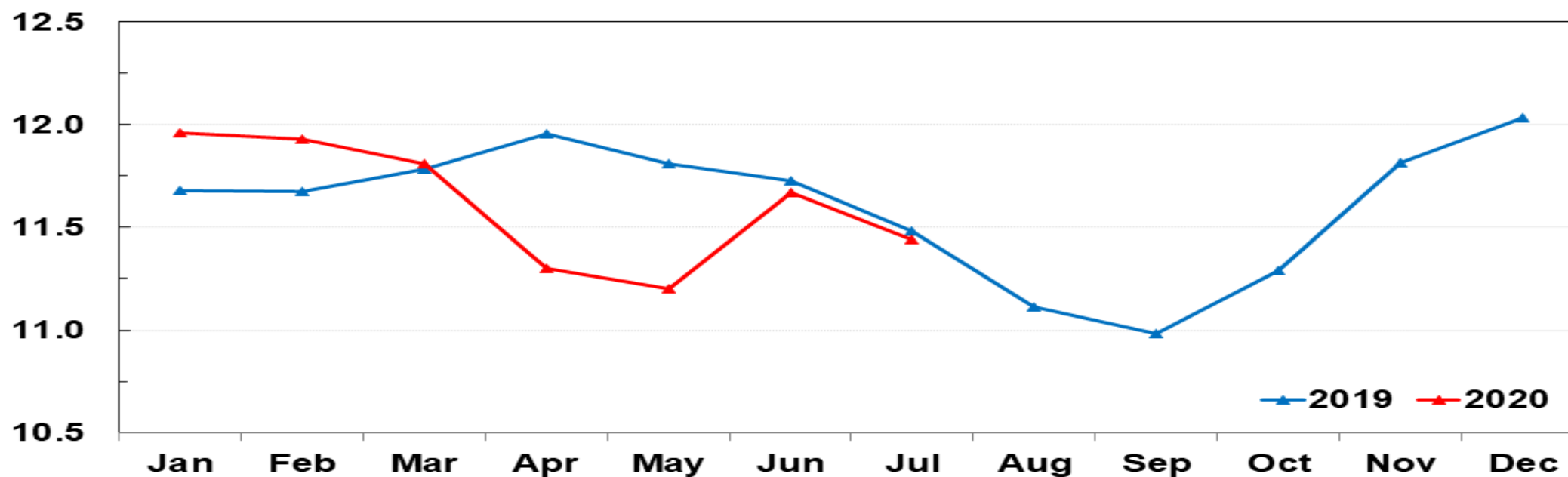
Source: USDA-NASS



CATTLE ON FEED

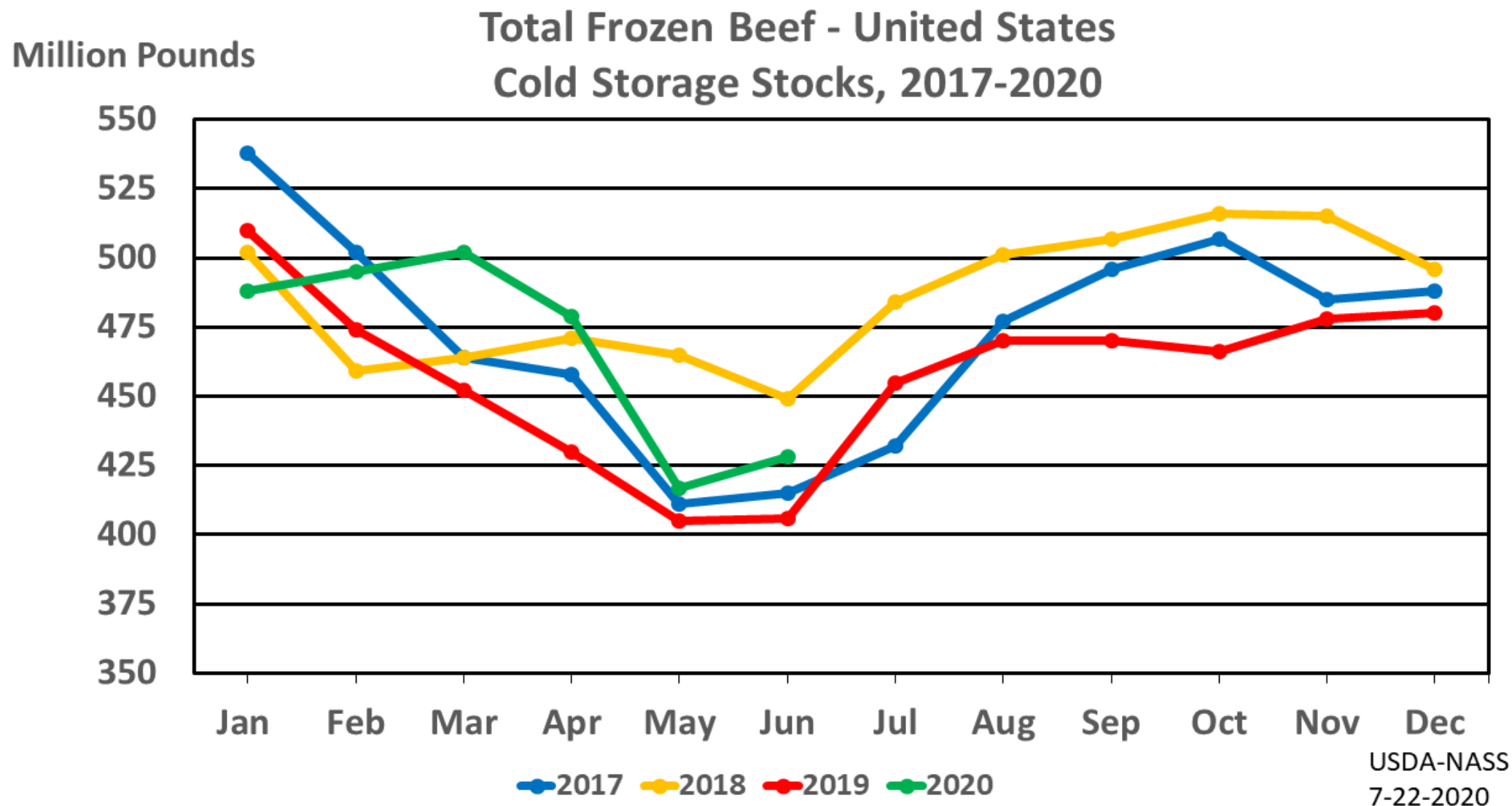
United States Cattle on Feed 1,000 + Capacity Feedlots

Million head



USDA-NASS
07-24-2020

BEEF COLD STORAGE STOCKS



BEEF EXPORTS: SMALL BUT VITAL

U.S. Beef Exports By Country

U.S. Beef Exports		1,489,489,663	1,376,220,528	-7.60%
Rank	Country	Jan. - June 2019	Jan. - June 2020	Change
1	Japan	408,425,212	431,104,135	5.55%
2	South Korea	338,207,386	313,080,907	-7.43%
3	Canada	130,208,202	145,847,754	12.01%
4	Mexico	219,922,173	137,053,668	-37.68%
5	Hong Kong	99,842,317	91,849,137	-8.01%
6	Taiwan	97,058,301	90,199,015	-7.07%
7	China (Mainland)	11,544,193	19,730,936	70.92%
8	Philippines	21,957,692	17,658,186	-19.58%
9	Vietnam	13,691,769	14,997,388	9.54%
10	Indonesia	13,157,647	13,979,190	6.24%
11	Netherlands	15,214,345	12,630,433	-16.98%
12	Chile	15,373,355	10,028,431	-34.77%
13	Guatemala	7,527,246	8,088,192	7.45%
14	Dom. Republic	10,742,896	6,104,411	-43.18%
15	UAE	8,684,075	5,331,761	-38.60%
16	Bahamas	5,287,847	4,465,282	-15.56%
17	Singapore	4,626,362	3,844,661	-16.90%
18	Colombia	6,046,518	3,710,465	-38.63%
19	Costa Rica	3,861,712	3,405,577	-11.81%
20	Kuwait	3,766,615	3,018,576	-19.86%

Source: ERS/USDA (pounds)

THE FUTURE: CHALLENGES

Daily change

New cases ▼



United States ▼

All regions ▼

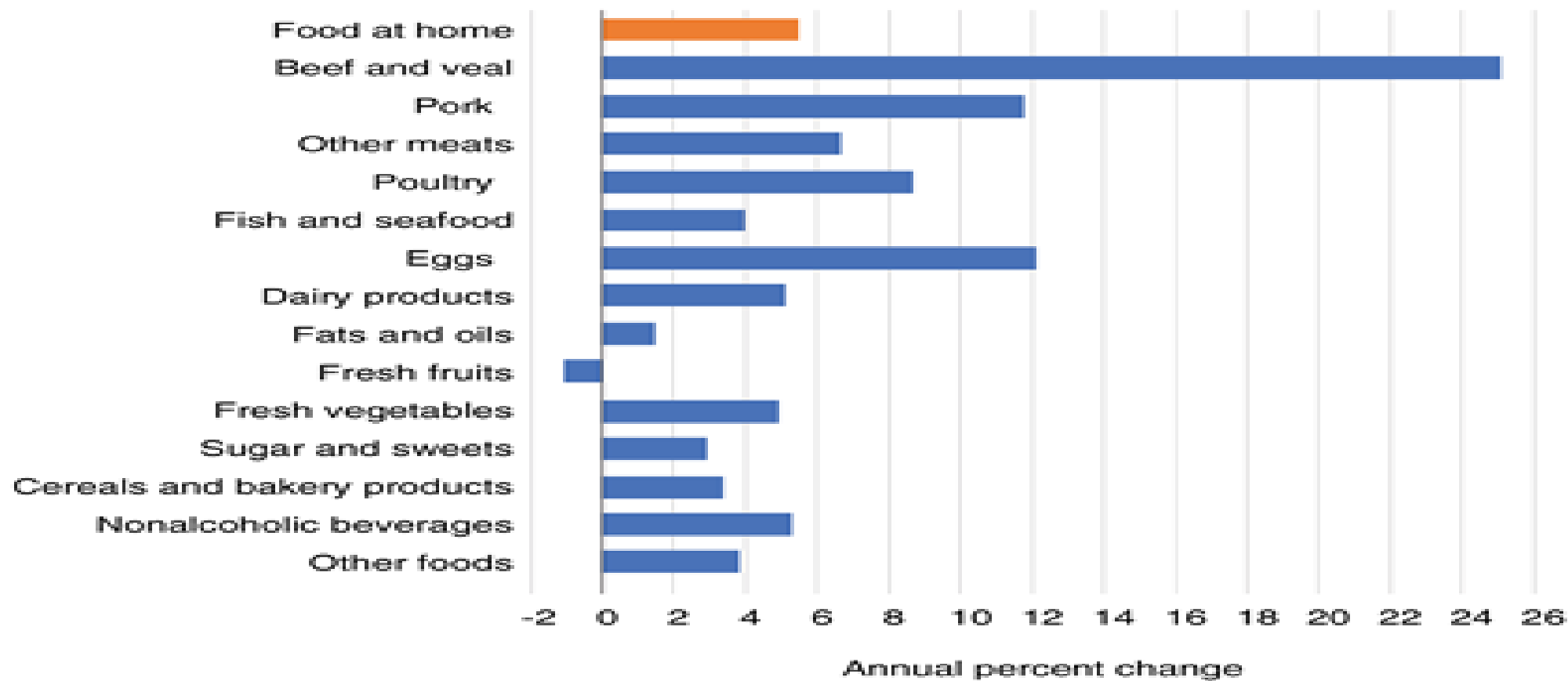
All time ▼



Each day shows new cases reported since the previous day · Updated less than 3 hours ago · Source: [Wikipedia](#) · [About this data](#)

COST TO EAT AT HOME

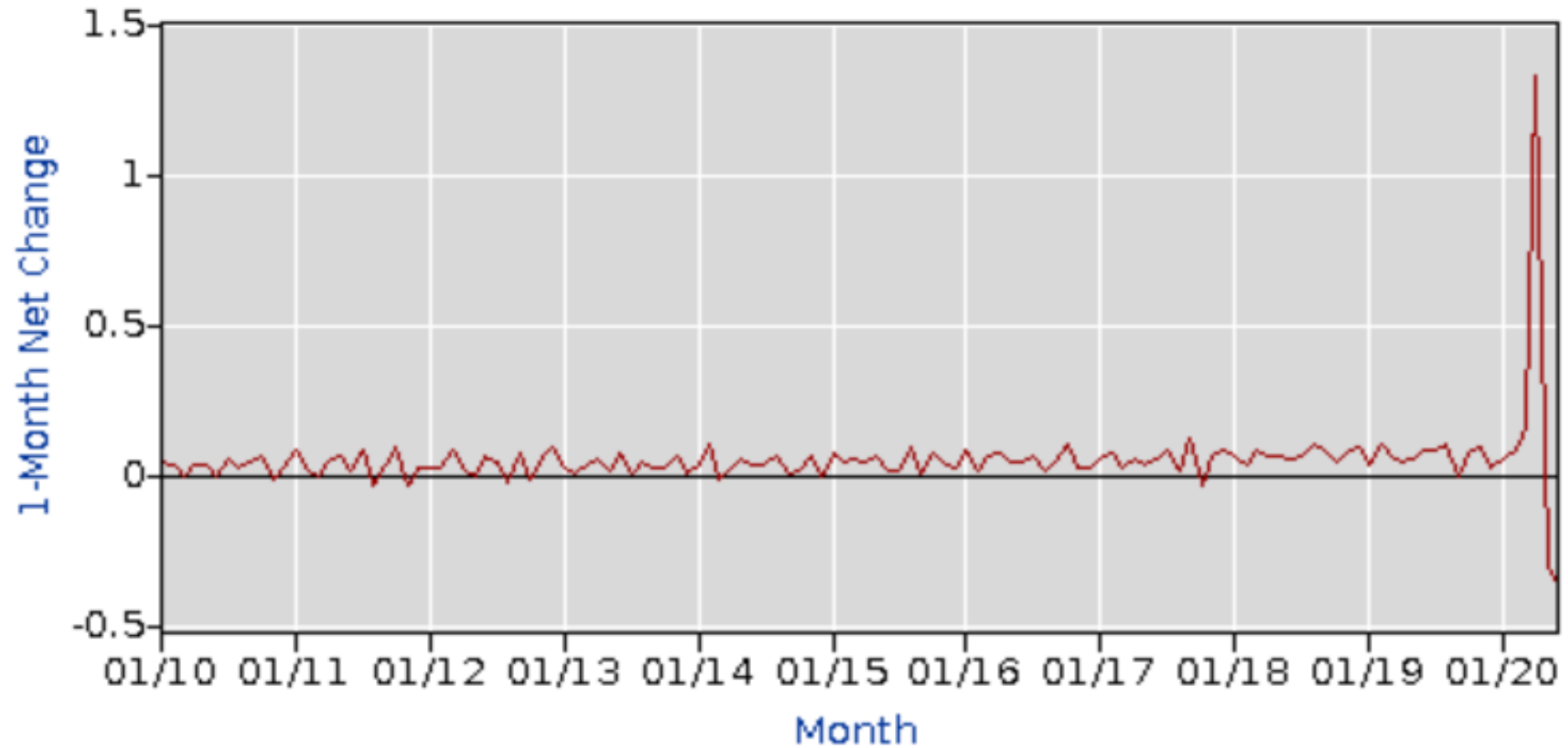
Price changes for major at-home food categories,
June 2019-June 2020



Source: USDA, Economic Research Service using U.S. Bureau of Labor Statistics Consumer Price Index data.

US INCOME MONTH OVER MONTH

Data Type: AVERAGE HOURLY EARNINGS OF ALL EMPLOYEES



ADDITIONAL QUESTIONS?

REACH ME BY EMAIL:

MPEARSON@ZANER.COM

DIRECT OFFICE LINE AT ZANER AG HEDGE:

312-277-0112

OR FIND ME ON TWITTER:

@PEARSONCATTLE