

# PASTURE TO PLATE:

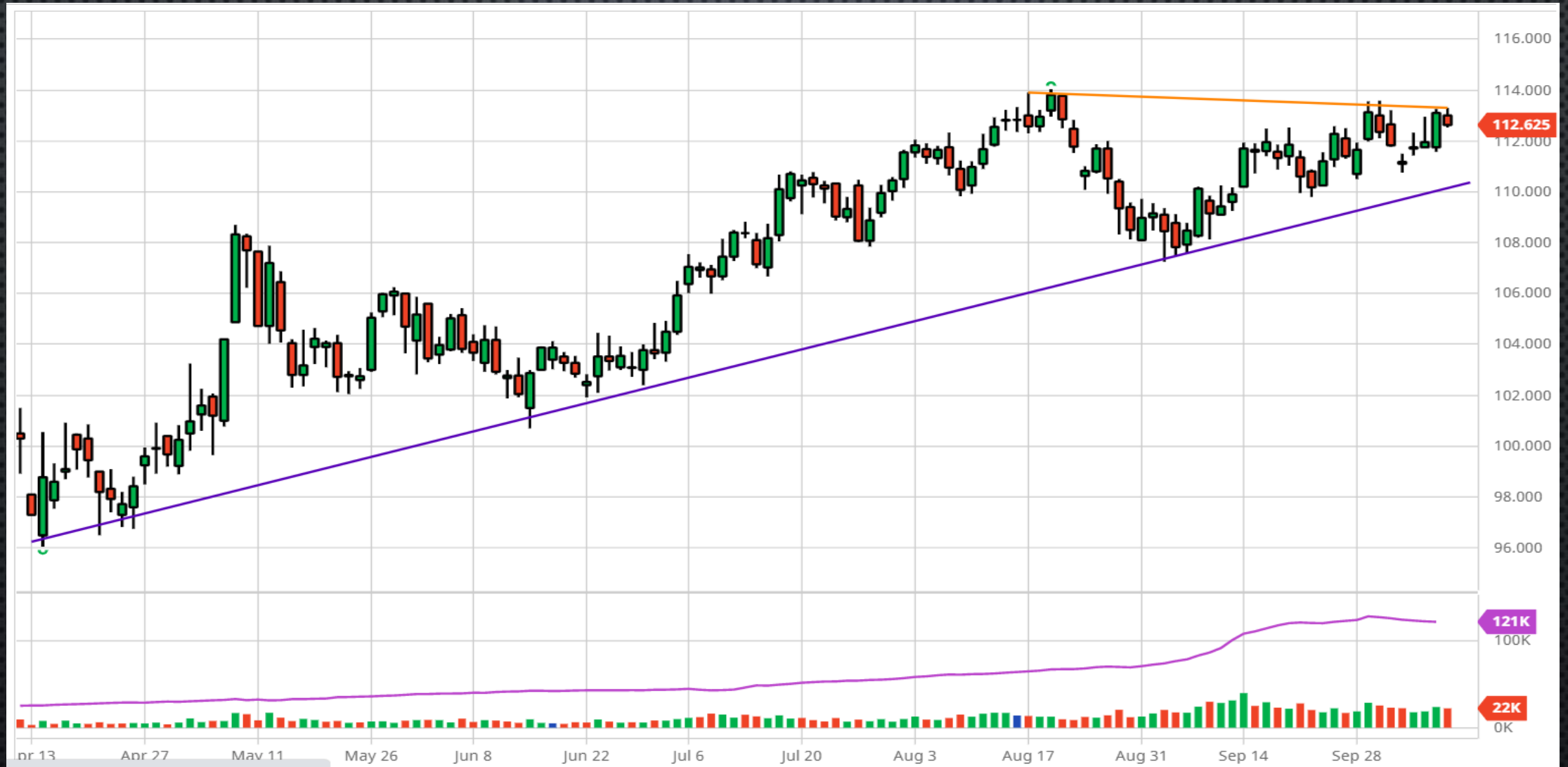
## CATTLE AND BEEF MARKET OUTLOOK

MIKE PEARSON

SOUTH DAKOTA FARM BUREAU

OCTOBER 8<sup>TH</sup>, 2020

# DECEMBER LIVE CATTLE 2020



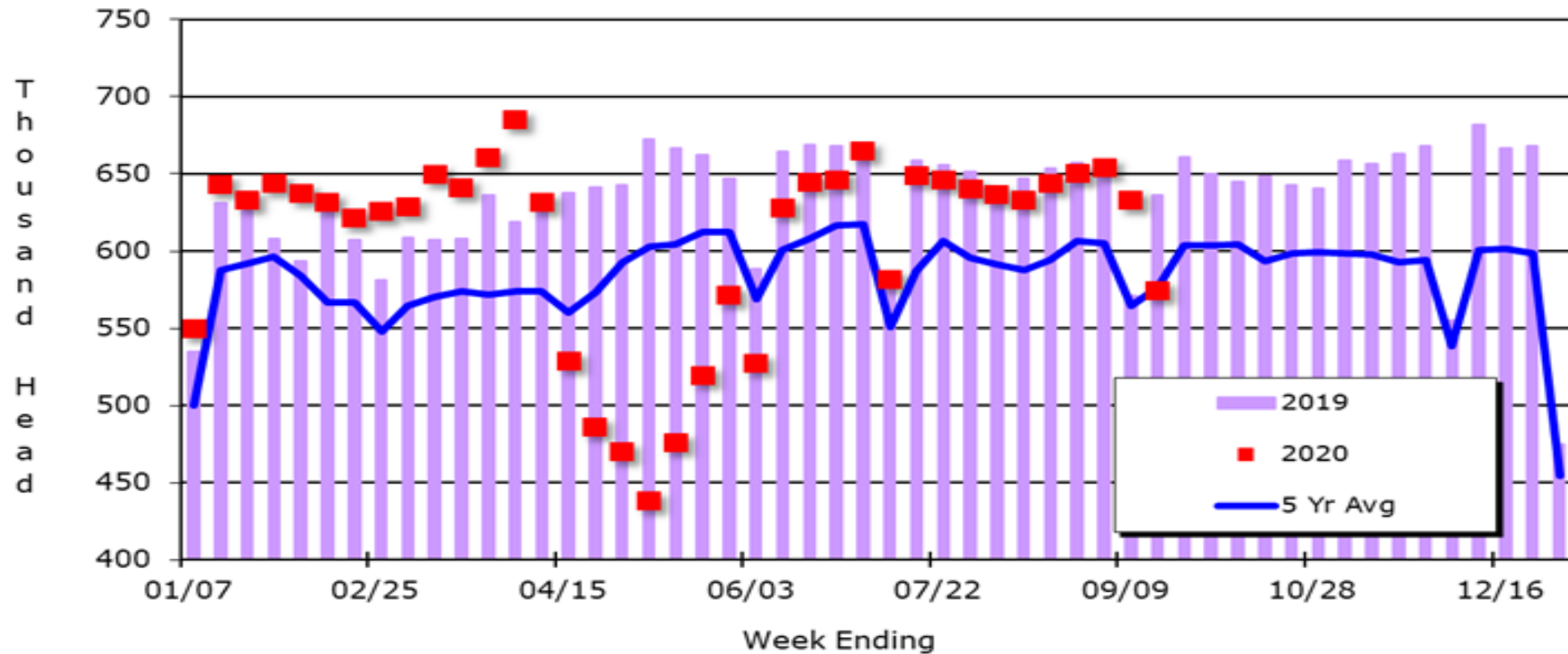
# NOVEMBER 2020 FEEDER CATTLE





# WEEKLY CATTLE SLAUGHTER

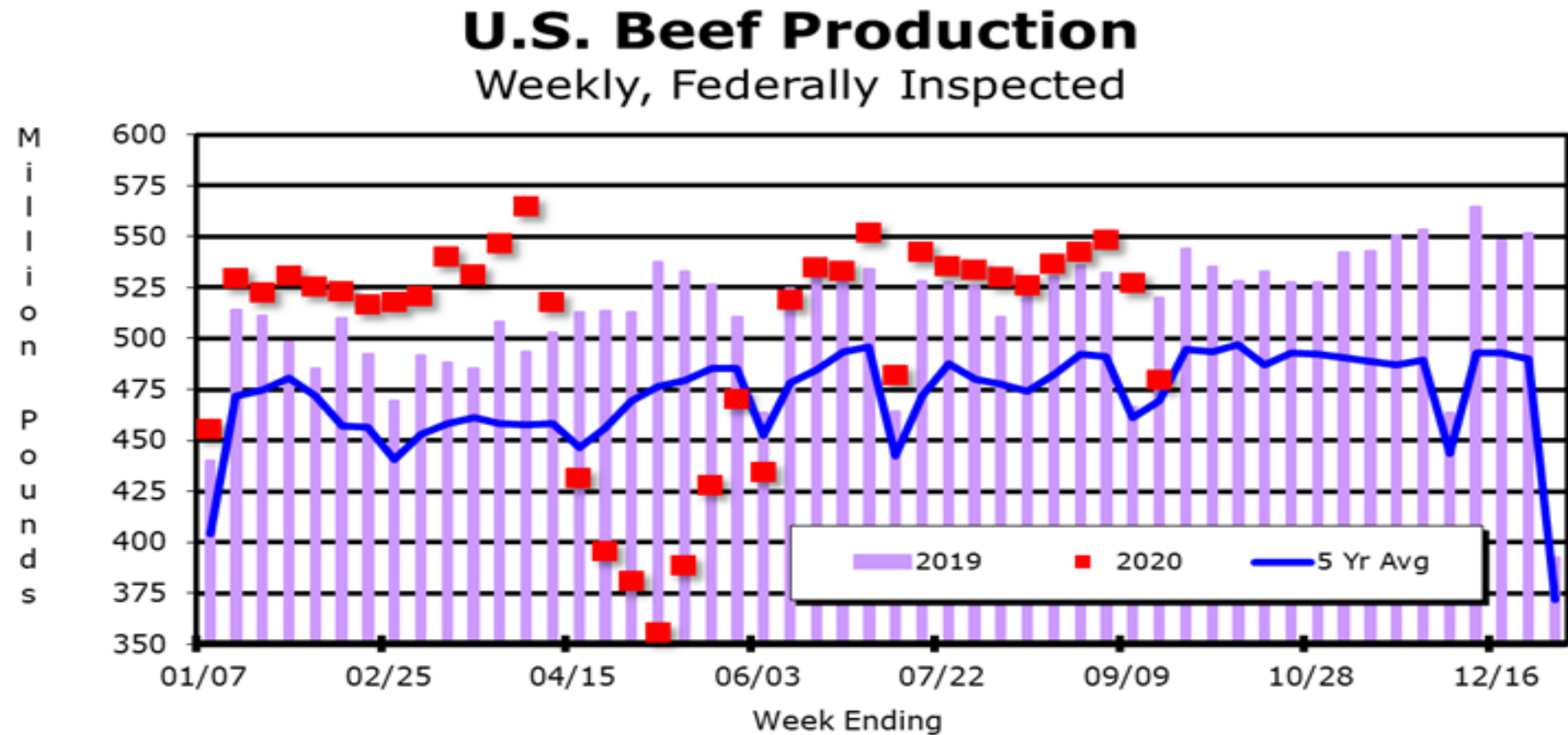
## U.S. Cattle Slaughter Weekly, Federally Inspected



Source: USDA & K-State Ag. Economics

KSU Dept. of Ag Econ  
[www.agmanager.info](http://www.agmanager.info)

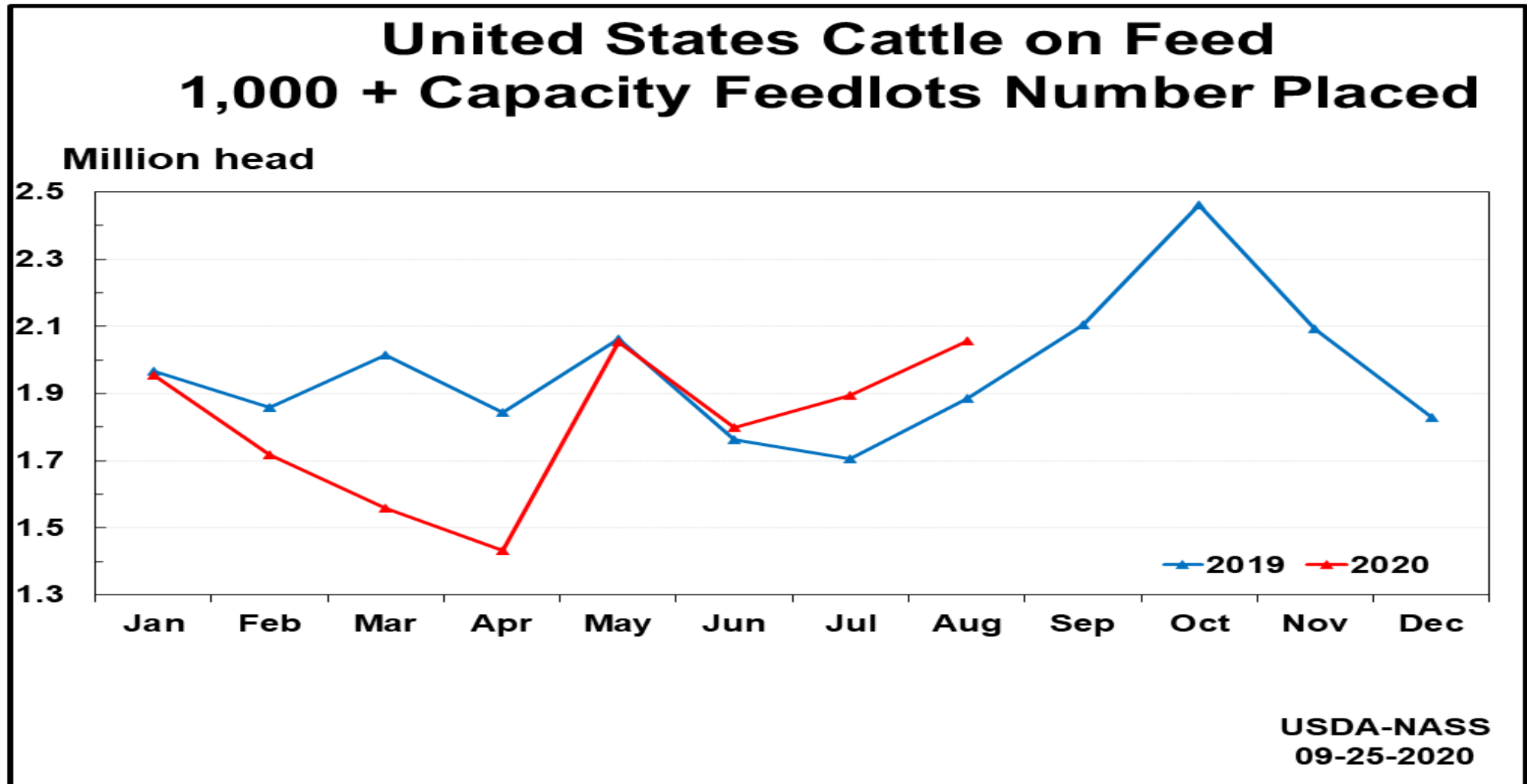
# TOTAL BEEF PRODUCTION



Source: USDA & K-State Ag. Economics

KSU Dept. of Ag Econ  
[www.agmanager.info](http://www.agmanager.info)

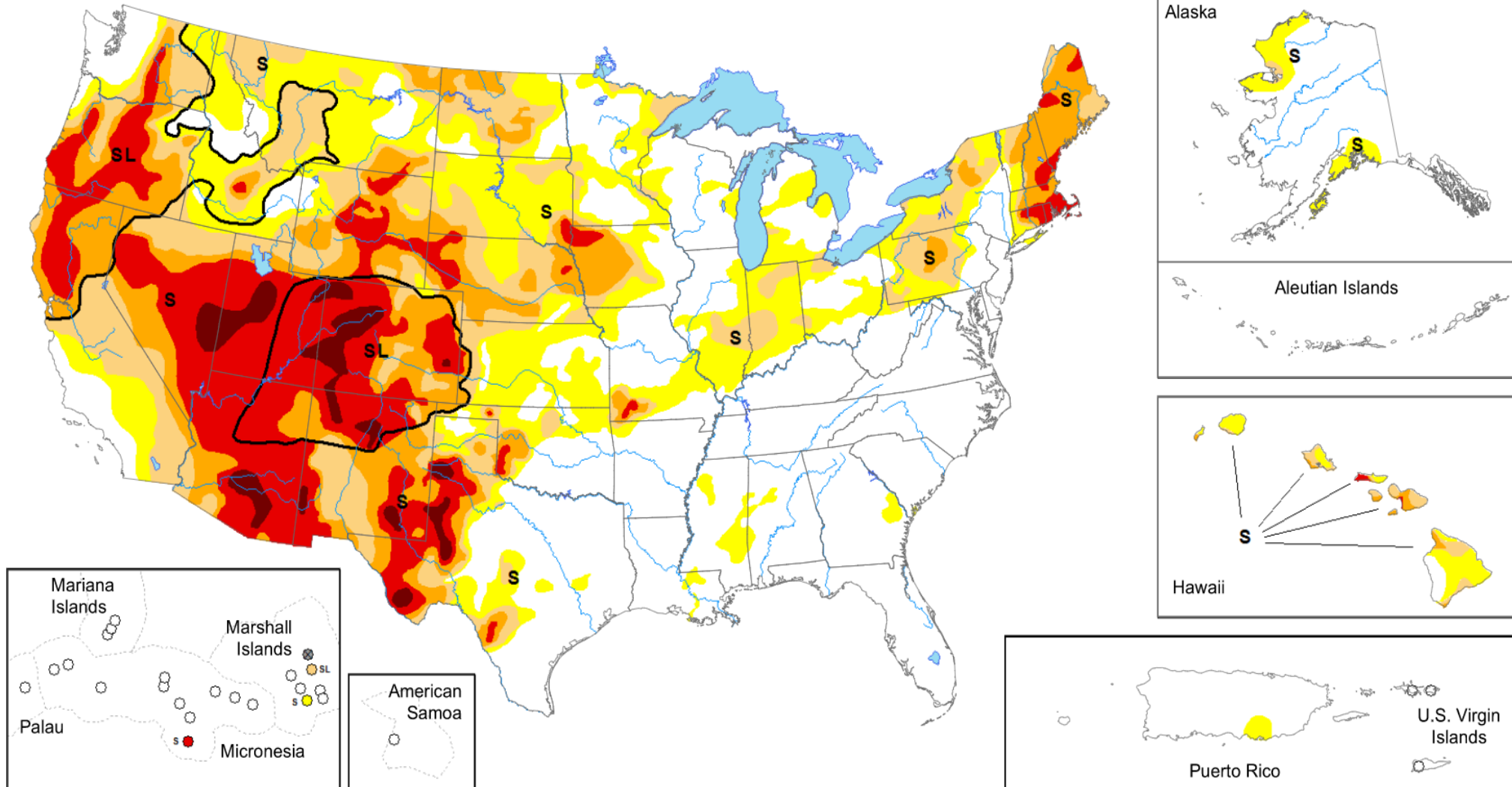
# CATTLE ON FEED





# WESTERN DRYNESS IMPACTS PASTURE

Data valid: October 6, 2020



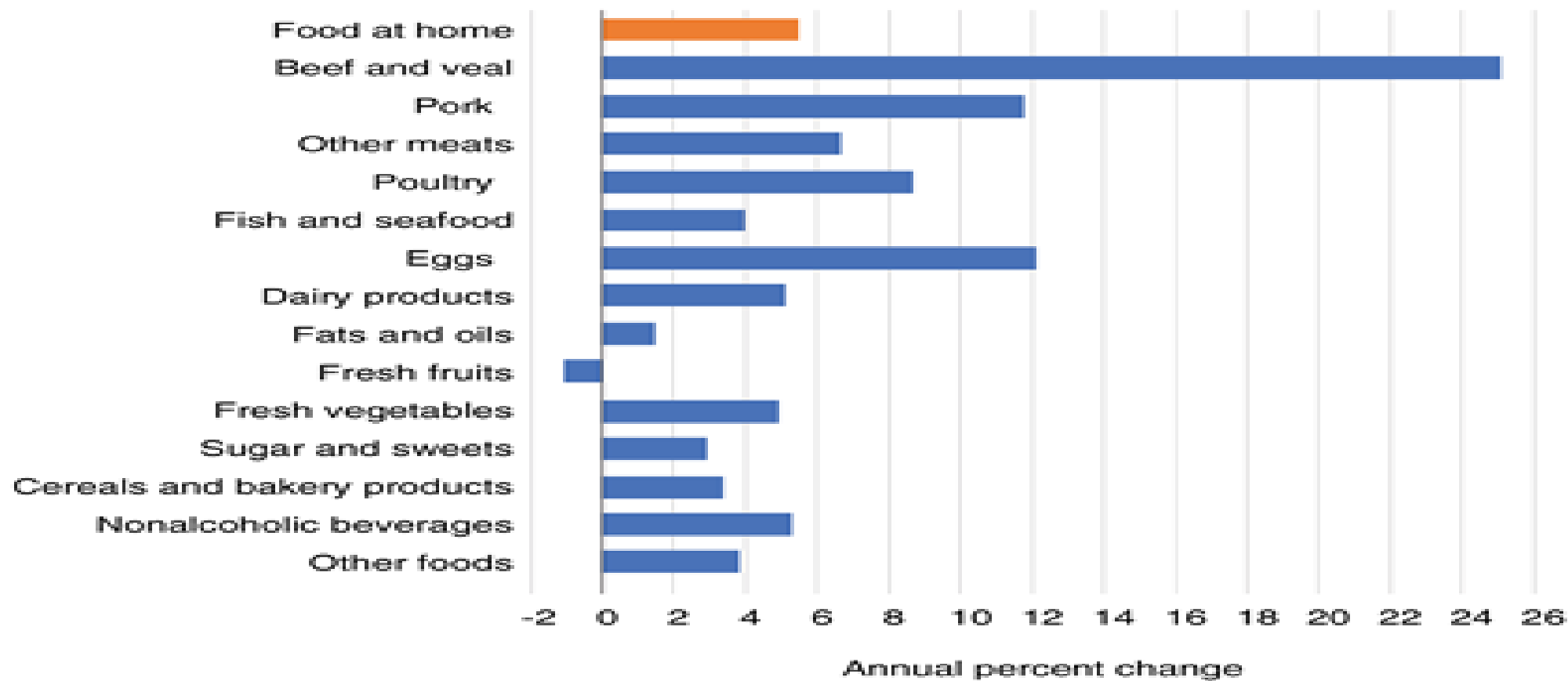
# RESTAURANT BOOKINGS

Name	10/7	10/6	10/5	10/4	10/3	10/2	10/1	9/30	9/29	9/28	9/27	9/26	9/25	9/24	9/23	9/22
Global	70.79%	70.6%	79.55%	80.59%	81.46%	75.33%	71.04%	71.68%	67.84%	75.3%	81.23%	81.67%	79.34%	71.91%	70.65%	70.02%
Canada	59.15%	66.13%	76.73%	61.44%	67.41%	64.95%	62.73%	64.88%	65.33%	72.38%	75.55%	71.41%	69.98%	61.78%	63.81%	64.79%
Germany	89.48%	82.02%	81.7%	100%	99.07%	92.01%	62.1%	79.3%	92.27%	93.78%	93.43%	92.2%	89.27%	88.72%	89.67%	91.91%
Mexico	58.86%	59.11%	78.09%	63.94%	64.84%	63.65%	58.83%	61.35%	60.1%	64.51%	60.2%	63.47%	58.87%	57.79%	56.51%	58.81%
United Kingdom	83.24%	79.38%	84.46%	90.01%	90.38%	82.07%	82.9%	85.82%	92.44%	100%	96.91%	97.77%	88.79%	81.09%	91.16%	100%
United States	70.36%	69.93%	79.66%	80.86%	81.78%	75.4%	71.98%	70.8%	64.11%	72.84%	80.79%	81.58%	80.13%	72.04%	69.32%	66.85%



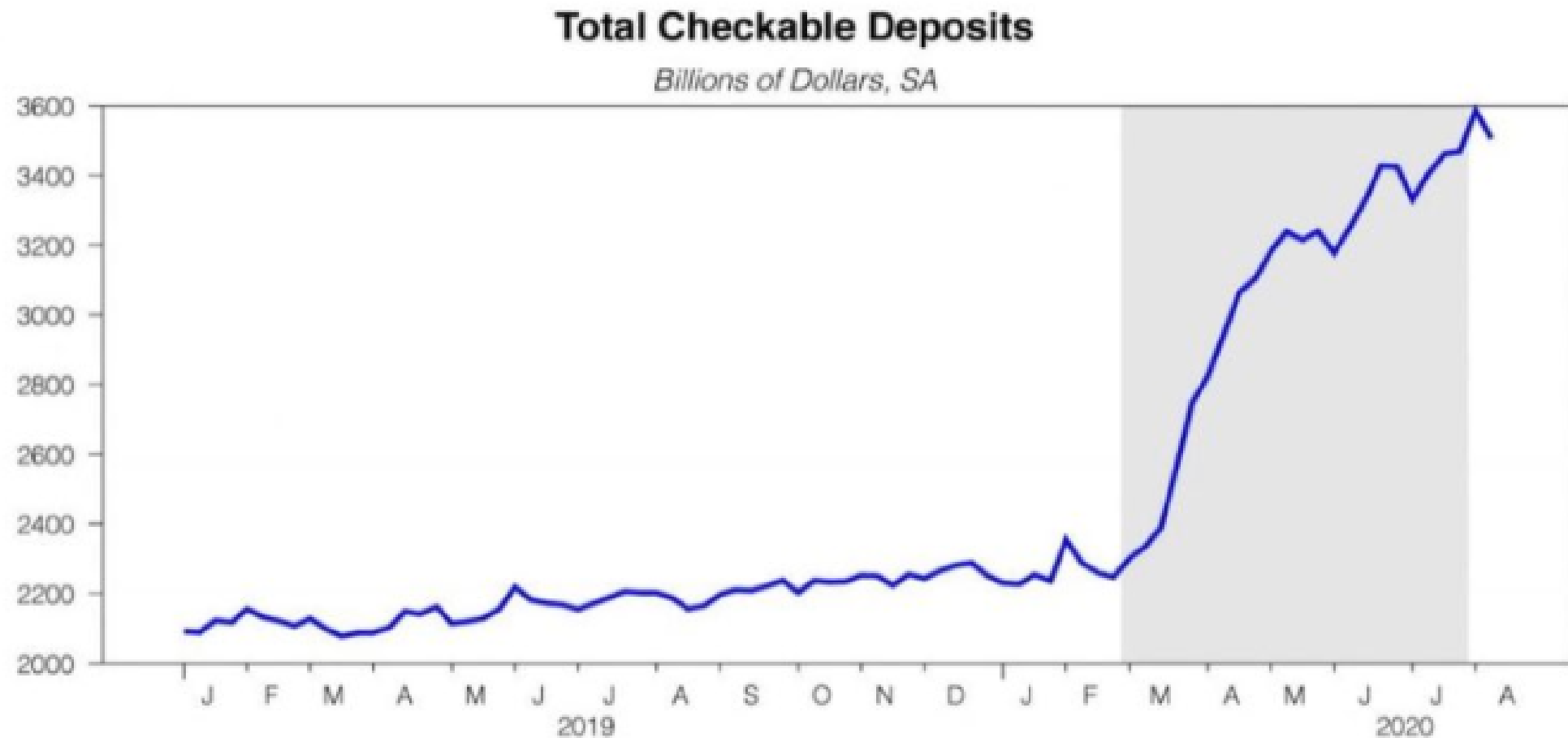
# COST TO EAT AT HOME

Price changes for major at-home food categories,  
June 2019-June 2020



Source: USDA, Economic Research Service using U.S. Bureau of Labor Statistics Consumer Price Index data.

# INFLATIONARY PRESSURE AHEAD?



web: <https://blogs.uoregon.edu/timduy/fedwatch/> \* twitter: @timduy \* data via fred \* chart created: 08/20/2020 14:59

# US DOLLAR INDEX





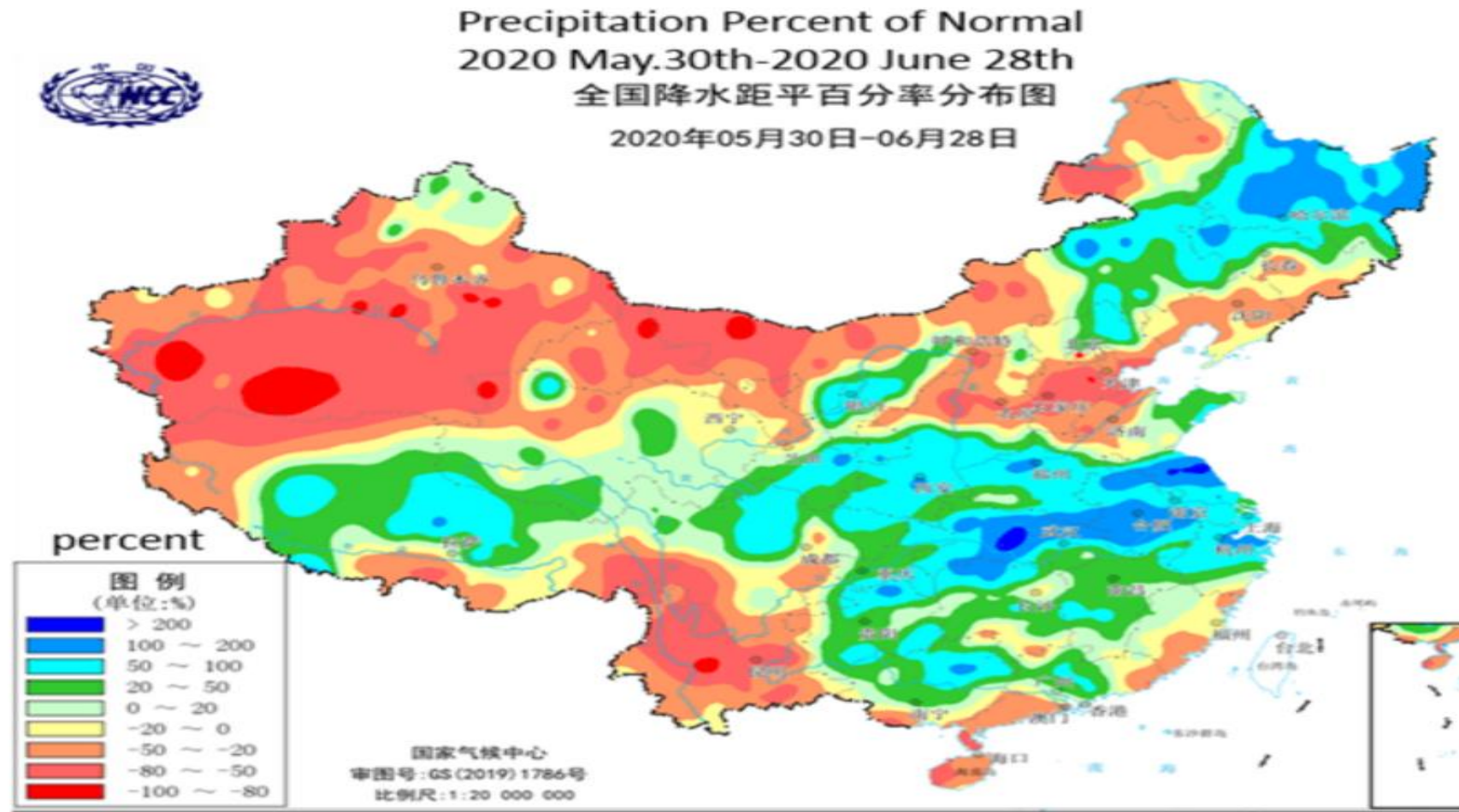
# BEEF EXPORTS

## U.S. Beef Exports By Country

U.S. Beef Exports		2,024,615,354	1,895,646,568	-6.37%
Rank	Country	Jan. - Aug. 2019	Jan. - Aug. 2020	Change
1	Japan	556,871,922	576,770,606	3.57%
2	South Korea	467,509,920	454,582,693	-2.77%
3	Canada	176,976,400	196,772,158	11.19%
4	Mexico	293,895,098	174,773,637	-40.53%
5	Taiwan	133,298,598	131,699,452	-1.20%
6	Hong Kong	130,306,302	126,708,526	-2.76%
7	China	16,944,915	36,527,121	115.56%
8	Philippines	29,431,455	23,410,870	-20.46%
9	Indonesia	18,753,042	22,056,159	17.61%
10	Netherlands	18,872,115	19,845,653	5.16%
11	Vietnam	19,766,008	19,416,508	-1.77%
12	Chile	21,946,489	13,658,615	-37.76%
13	Guatemala	10,989,902	10,595,008	-3.59%
14	Dominican Republic	14,388,846	7,397,448	-48.59%
15	United Arab Emirates	10,871,964	6,598,045	-39.31%
16	Bahamas	7,029,838	5,395,635	-23.25%
17	Singapore	6,285,160	5,340,226	-15.03%
18	Colombia	8,152,621	4,973,397	-39.00%
19	Costa Rica	5,235,877	4,197,842	-19.83%
20	Italy	6,923,678	3,554,280	-48.66%

Source: ERS/USDA (pounds)

# WILDCARD FOR 2020-2021



Source: China CMA



# ADDITIONAL QUESTIONS?

REACH ME BY EMAIL:

MMPEARSO@GMAIL.COM

OR FIND ME ON TWITTER:

@PEARSONCATTLE